

3

İŞ MAKİNALARI

construction machines



PIMAKINA®
www.pimakina.com.tr

hakkımızda about us

Deriner / ARTVİN

Pİ MAKİNA ERG İnşaat Ticaret ve Sanayi A.Ş., 1972’de kendi hava alanı inşaatında kullanmak üzere ilk beton santralini (360m³/saat kapasiteli) üretmiş olup yine ürettiği muhtelif iş ve inşaat makinaları ile üç hava alanı bitirmiştir.

40 yıldan beri ağır iş ve inşaat makinaları ile sanayi tesisleri üretmek bu konuda uzman bir kuruluş olduğunu ispat etmiş, dünya üzerinde birçok ülkeye makinalarını kurup, yaptığı ihracatlarla da dünya pazarında önemli bir pay sahibi olmuştur.

Büyük müteahhitlik, madencilik ve yatırımcı kamu kuruluşları ile silahlı kuvvetlere de yaptığı makinalarla uzun yıllar başarılı hizmetler vermekte olan PİMAKİNA’nın önemi ve gücü, her geçen gün müşterilerimizce de daha fazla takdir edilmektedir.

Pİ MAKİNA, inşaat firmalarının ihtiyaçları olan tüm sabit ve hareketli makinaları Avrupa ile aynı kalitede ham malzeme, hidrolik ve elektrik ürünleri kullanarak üretmektedir.

Pİ MAKİNA, üretim portföyünü inşaat makinalarında kırma eleme ve yıkama tesisleri, beton santralleri, beton pompaları ve kule vinçler ile geliştirmiş ve pekiştirmiş olup; iş makinalarından da özellikle lastik tekerlekli yükleyiciler ile her geçen gün zenginleşmiştir.

Know-How ve projelendirmesi tamamen Pİ MAKİNA’ya ait olan tüm bu makinalar, 40 yıldır üstün kalitesi, örgün servis ağı, satış sonrası kusursuz hizmetiyle ve sorunsuz işletilmesiyle tüm dünyada kullanılmaktadır.



PI MAKINA ERG Construction Trade and Industry A.S. manufactured its first concrete batch plant (with a capacity of 360m³ per hour) in order for using in construction of its own air field in 1972. And, the company has completed constructions of 3 air fields by using various heavy work and construction machine ries manufactured by itself. The company has proved its capability by manufacturing heavy work and construction machineries and industrial facilities for 40 years. It has gained a prominent place in the world market by exporting and installing its machineries all around the world.

The importance and capability of PI MAKINA, which has been successfully serving to powerful contractors, mining and investor public companies and armed forces for years with machineries it manufactured have been appreciated more and more by its clients day by day.

PI MAKINA manufactures all stationary and mobile machineries required by construction companies, in European quality, by using raw material, hydraulic and electrical equipments and parts.

PI MAKINA has enriched and consolidated its product portfolio with construction machineries, stone crushers and washers, concrete batch plants, concrete pumps and tower cranes, and especially with rubber wheeled loaders.

All these machineries fully designed and manufactured by PI MAKINA are in the service of the world for 40 years with their high qualities and flawless operating performance as being supported by very well organized service network.

fabrikamız

our factory



■ mühendislik

Pİ MAKİNA alanında Türkiye'nin en büyük firmalarından biri olarak, özellikle proje geliştirme ve Ar-Ge'ye verdiği önemle makina sektöründe her geçen gün markasını güçlendirmiştir. Bu birimlerde çalışan 100'e yakın mühendisiyle müşterilerin her türlü isteklerine cevap ve-rebilme yeteneğini geliştirmiştir. Son teknoloji ürünü ekipmanlarıyla, bilgi ve becerileriyle kendini sürekli geliştiren Pİ MAKİNA, müşteri isteklerine en doğru şekilde ve alternatif çözüm yolları üretebildiği için her daim sektörün önde gelen ve lider firması olmuştur.

■ üretim

Ankara'da bulunan ve 250.000m²' lik fabrika alanına sahip olan Pİ MAKİNA, rakiplerine göre çok daha üstün teknolojiyle donatılmış ekipmanlarıyla, üstün hizmet vermenin ve kalitenin ayrıcalıklarını müşterilerine yaşatmanın kıvançını taşımaktadır.

Fabrika sahası laboratuvarlar, test merkezleri, kumlama ve fırın boyası yapan birimleri, yüz-lerce CNC tezgahi ile donatılmış olup; özenle makina üretmenin, kalite kontrolün üretimdeki öneminin ve el değmeden sıfır hata ile ürünler çıkarmanın özgüvenini taşımaktadır.

■ servis

Pİ MAKİNA, sadece üretim ve mühendislik çalışmalarına önem vermekle kalmamış; 7/24 servis ve yedek parça anlayışı ile, müşteriye verilen değeri her geçen gün artırarak "Satış Sonrası Hizmet" birimini kurmuştur. Bu birim tüm Türkiye'ye ve dünyanın birçok ülkesine hizmet verebilecek kapasitededir ve bu çembere her geçen gün yenileri eklenmektedir.

Gölbaşı / ANKARA



engineering ■

As one of the prominent firms in its own field, PI MAKINA has achieved strengthening its name in the market of machinery day by day, especially by giving importance on project development and R&D. With approximately 100 technicians working for Project Development and R&D departments, it has improved its capability to meet all requests of its clients. PI MAKINA has always been a leading firm in the sector since it has always been able to correctly produce alternative solutions for customer requests by using the most modern equipment and updated knowledge. Perfect service and customer satisfaction are the basic principles of the firm.

manufacture ■

PI MAKINA is proud of producing high quality services and machineries, and making its clients satisfied with privileges of quality, at its manufacturing facilities, located at Ankara, covering 250.000 sqm with equipped with far better and more modern equipment in comparison to its competitors. The company's manufacturing facility has been equipped with testing centers, sanding and paint drying units, hundreds of CNC machineries. So, it carries self-confidence of carefully manufacturing defect free machineries under strict quality control. The company is the biggest firm in its area with approximately 1000 employees.

service ■

PI MAKINA does not only focus on manufacturing and engineering works but also provides its customers with 7 days and 24 hours service and spare parts. In this regard, the company has established an "After Sale Service" department as an indication of its respect to its clients. This department has a capacity of providing services not only throughout Turkey but also in various countries all over the world. And, new countries are added to its service network day by day.

PI 3006

PI 3009

PI 3012

PI 3015



TEKNİK ÖZELLİKLER

technical specifications

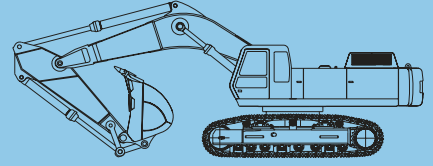
	3006	3009	3012	3015
Motor (hp) Engine (hp)	130	200	360	450
Güç Aktarma Power train	Hidrostatik	Hidrostatik	Hidrostatik	Hidrostatik
Makara Roller	7+1	9+1	8+3	8+3
Palet (mm) Shoe Width (mm)	500	640	605	605
Kazma Derinliği (mm) Digging Depth (mm)	4.800	6.155	6.760	8.000
Koparma Gücü (kg) Breakout Force (kg)	10.500	17.500	26.800	25.000
Ağırlık (kg) Weight (kg)	18.500	31.500	54.000	65.000
Kepçe Kapasitesi (m ³) Bucket Capacity (m ³)	0.83	1.4	3.0	3.25



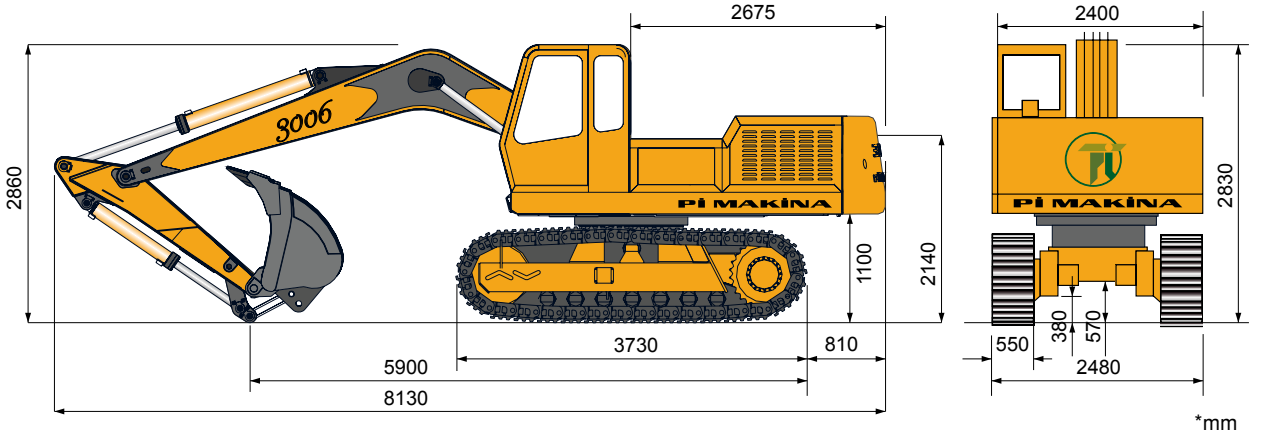


Paletli Ekskavatörler

Crawler Excavators

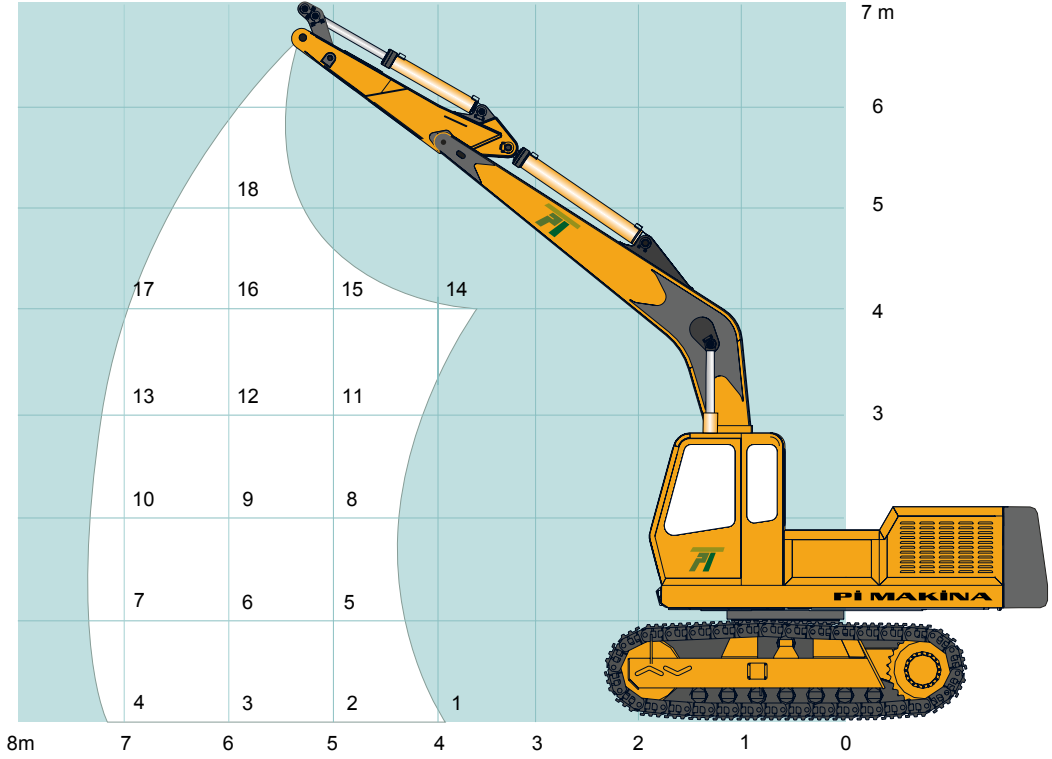


Pi 3006 Genel Ölçüler Pi 3006 Machine Dimensions



Pi 3006

Özel Bom ile Kaldırma Kapasitesi Lifting Capacity with special Boom

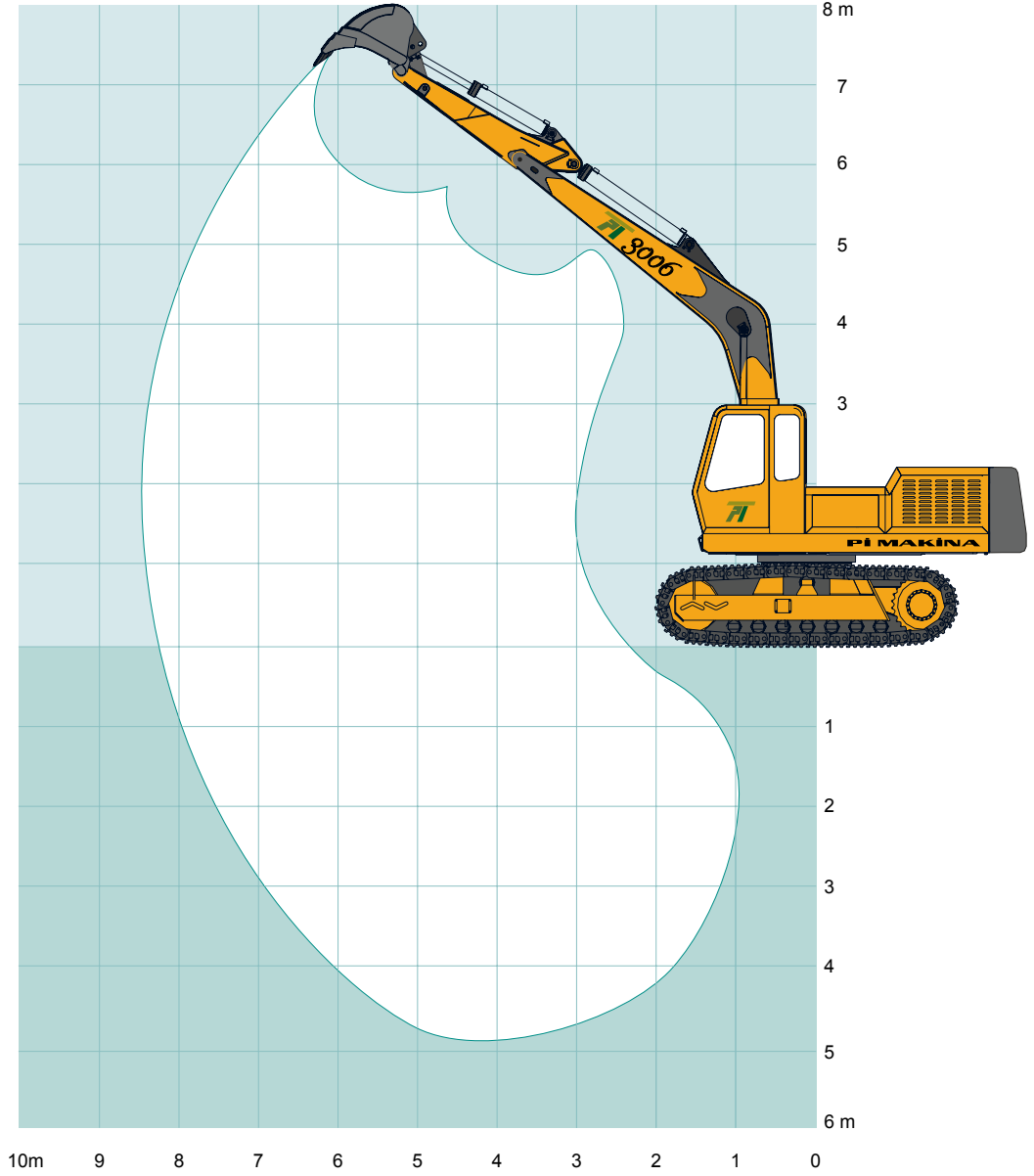


Pozisyon Position	1	2	3	4	5	6	7	8	9	10	11	12	13	14	15	16	17	18
Kapasite ton Capacity tons	4.8	3.5	2.7	2.5	3.7	2.8	2.5	3.7	2.8	2.6	4.3	3.8	2.6	4.9	4	3.5	2.6	3.1

Pi 3006

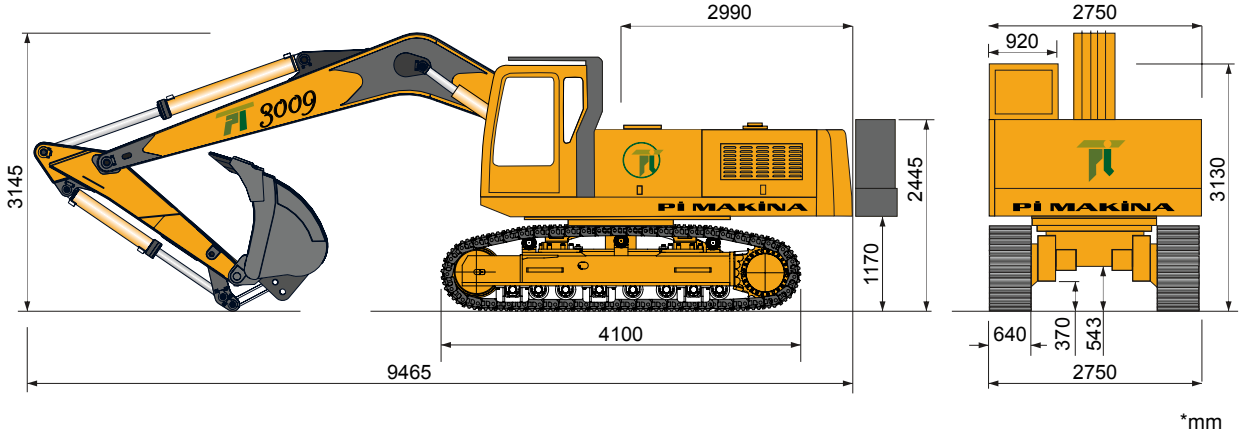
Çalışma Aralığı

Working Ranges



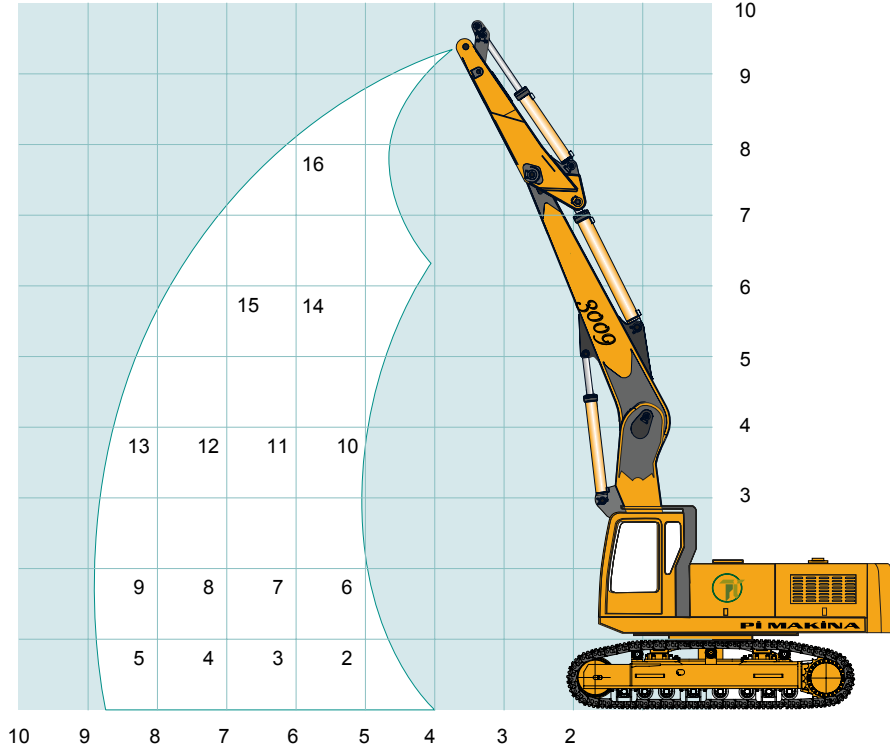
Kazma Derinliği (mm) Digging Depth (mm)	4.800
Bom Uzanma (mm) Max. Reach (mm)	8.510
Boşaltma Yüksekliği (mm) Discharging Height (mm)	5.500
Keççe Dönme Açısı Bucket Angle	175°

Pi 3009 Genel Ölçüler Pi 3009 Machine Dimensions



Pi 3009

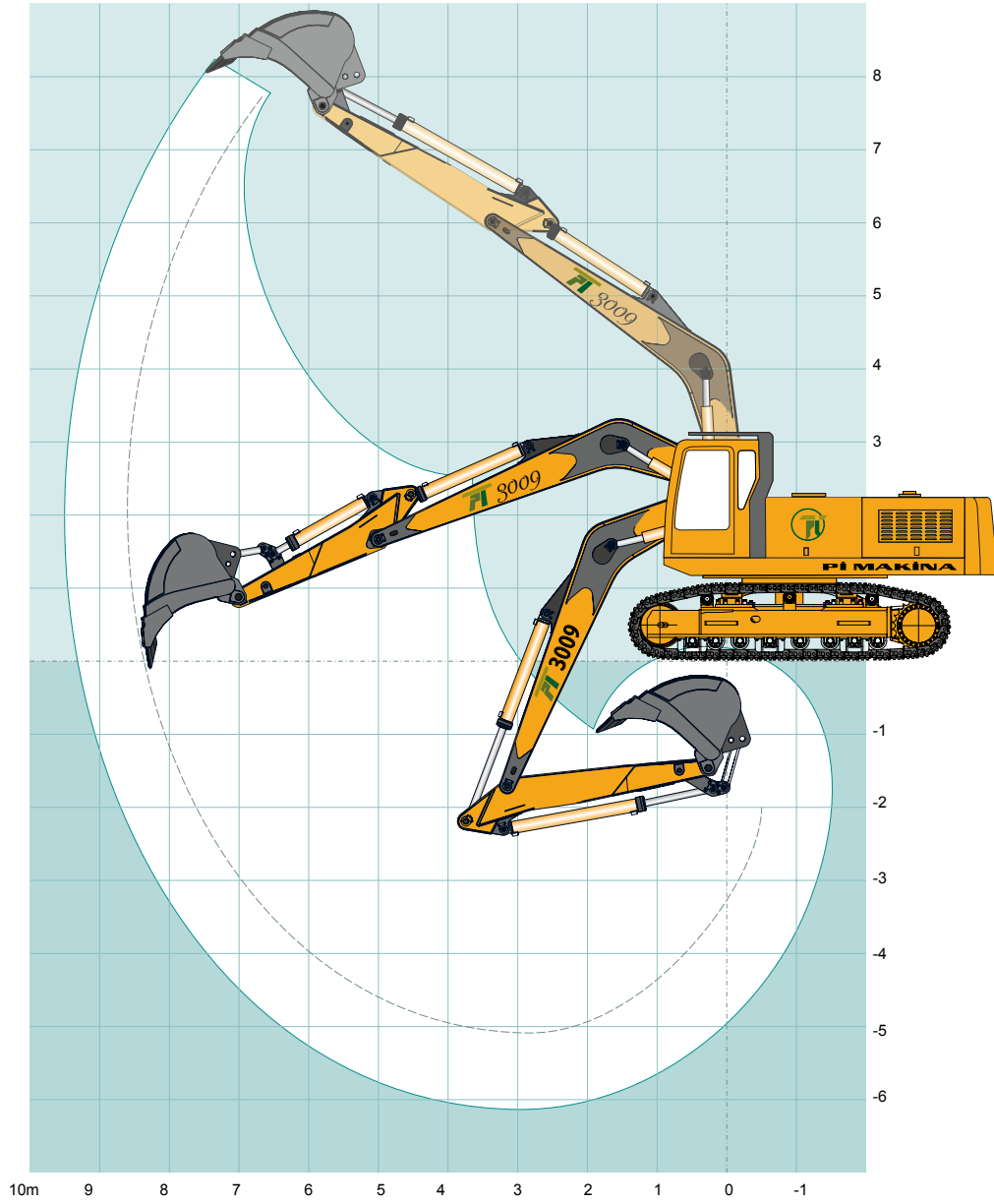
Özel Bom ile Kaldırma Kapasitesi Lifting Capacity with special Boom



Pozisyon Position	1	2	3	4	5	6	7	8	9	10	11	12	13	14	15	16
Kapasite ton Capacity tons	13	11	8	7	5.4	11	9.2	7.2	6.3	12	9.5	7.5	6.5	9	7.6	8.4

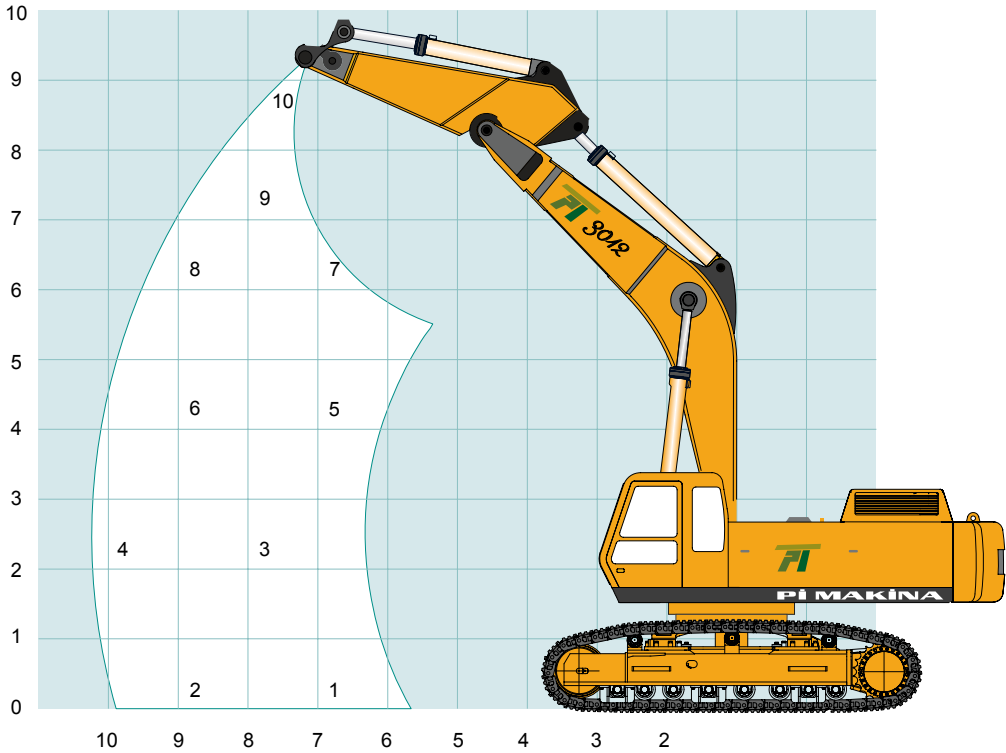
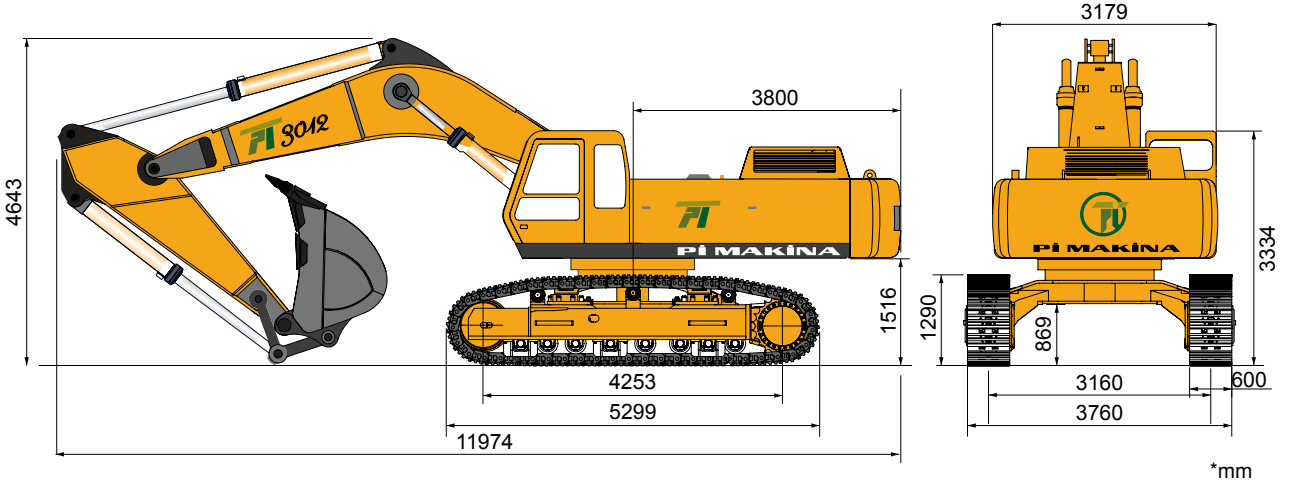
Pi 3009

Çalışma Aralığı / Working Ranges



Kazma Derinliği (mm) Digging Depth (mm)	6.155
Bom Uzanma (mm) Max. Reach (mm)	9.700
Boşaltma Yüksekliği (mm) Discharging Height (mm)	6.200
Kepçe Dönme Açısı Bucket Angle	175°

PI 3012 Genel Ölçüler PI 3012 Machine Dimensions

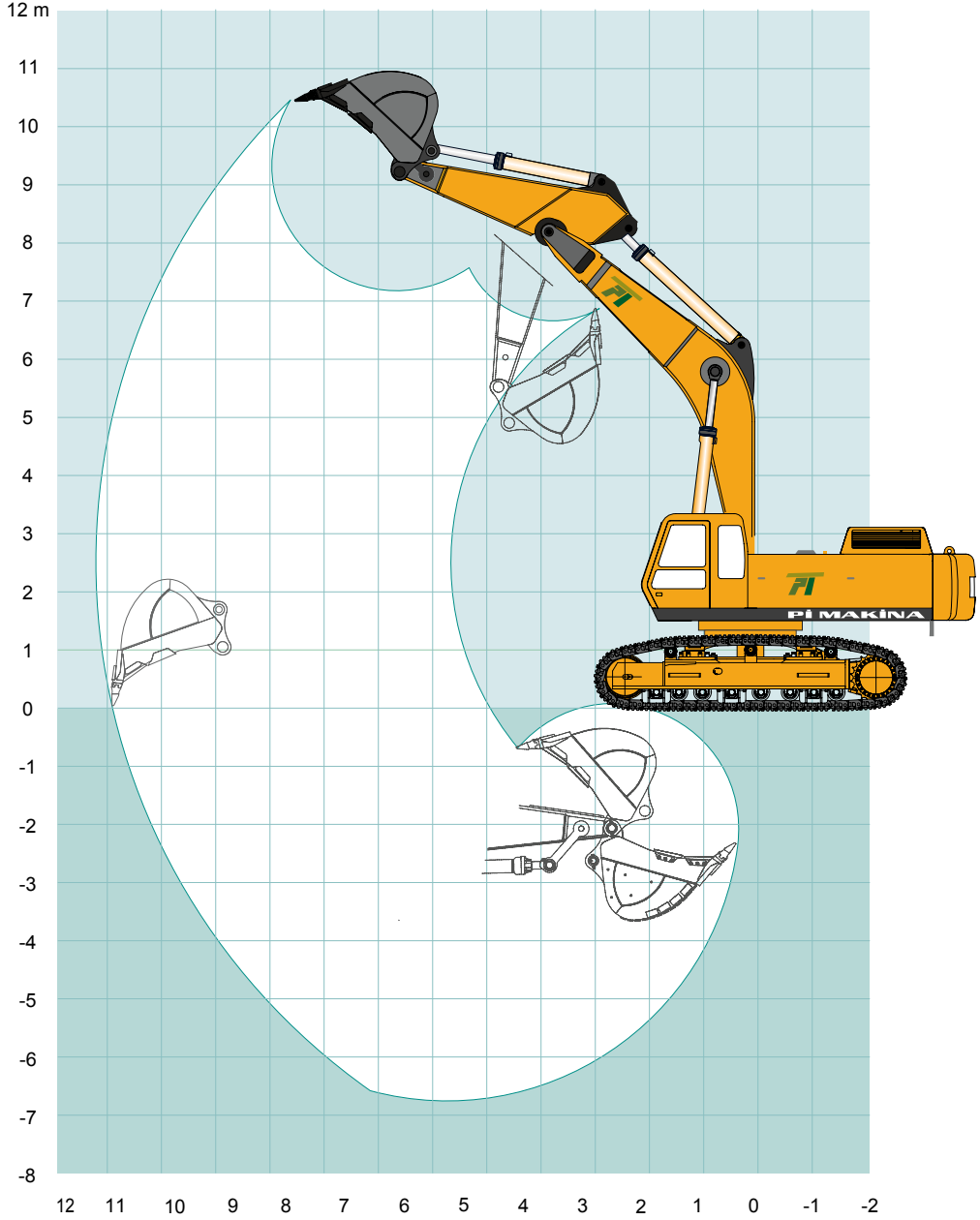


Pozisyon Position	1	2	3	4	5	6	7	8	9	10
Kapasite ton Capacity tons	14.4	9.1	12.1	7.8	14.8	10.3	12.0	10.4	10.4	9.8

Pi 3012

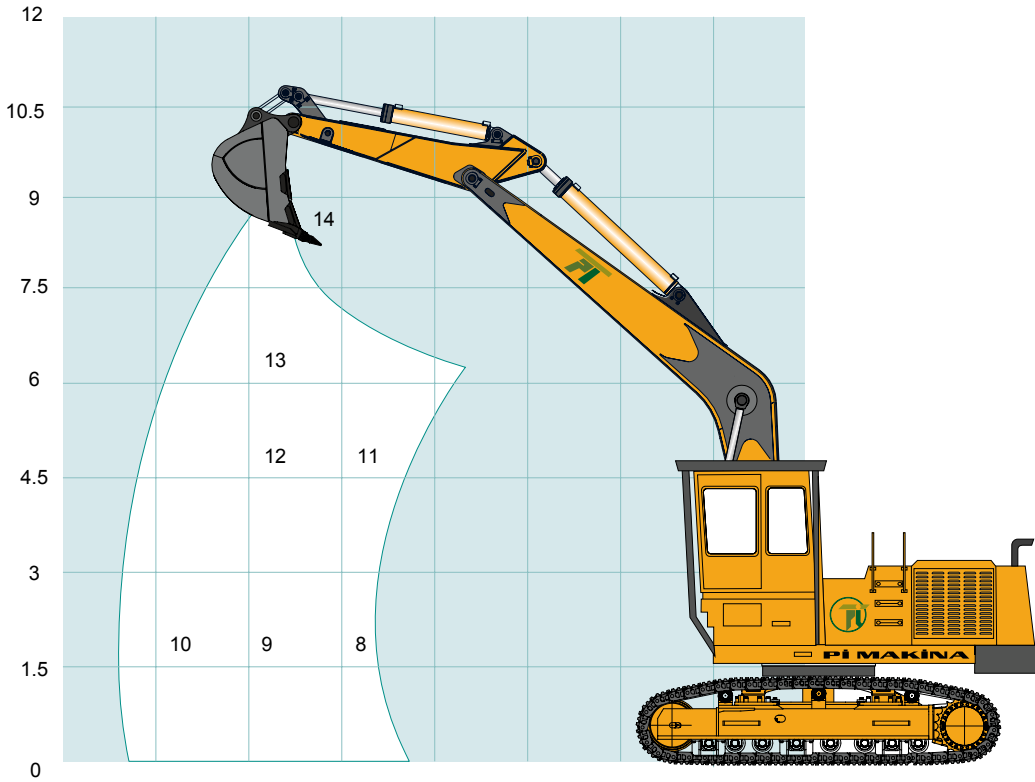
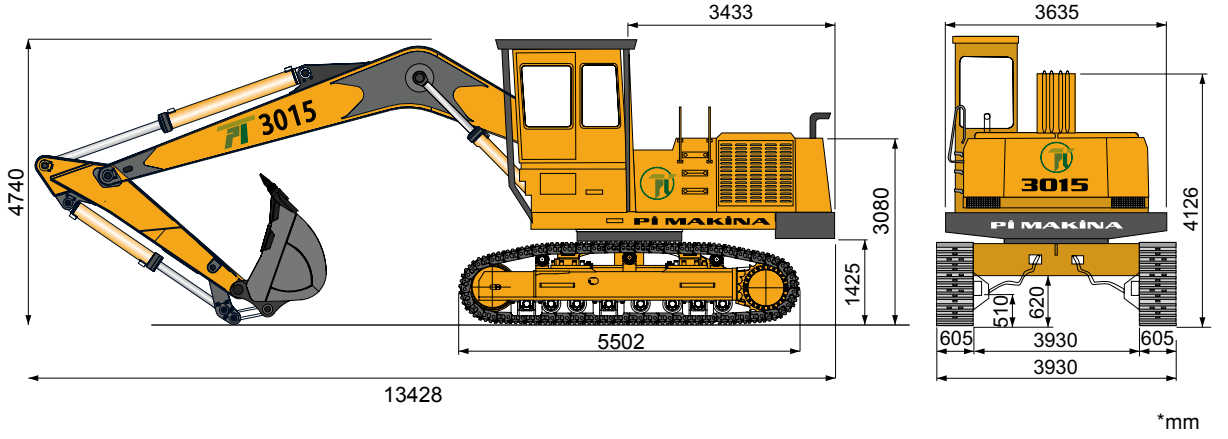
Çalışma Aralığı

Working Ranges



Kazma Derinliği (mm) Digging Depth (mm)	6.760
Bom Uzanma (mm) Max. Reach (mm)	11.240
Boşaltma Yüksekliği (mm) Discharging Height (mm)	7.200
Keççe Dönme Açısı Bucket Angle	160°

PI 3015 Genel Ölçüler PI 3015 Machine Dimensions

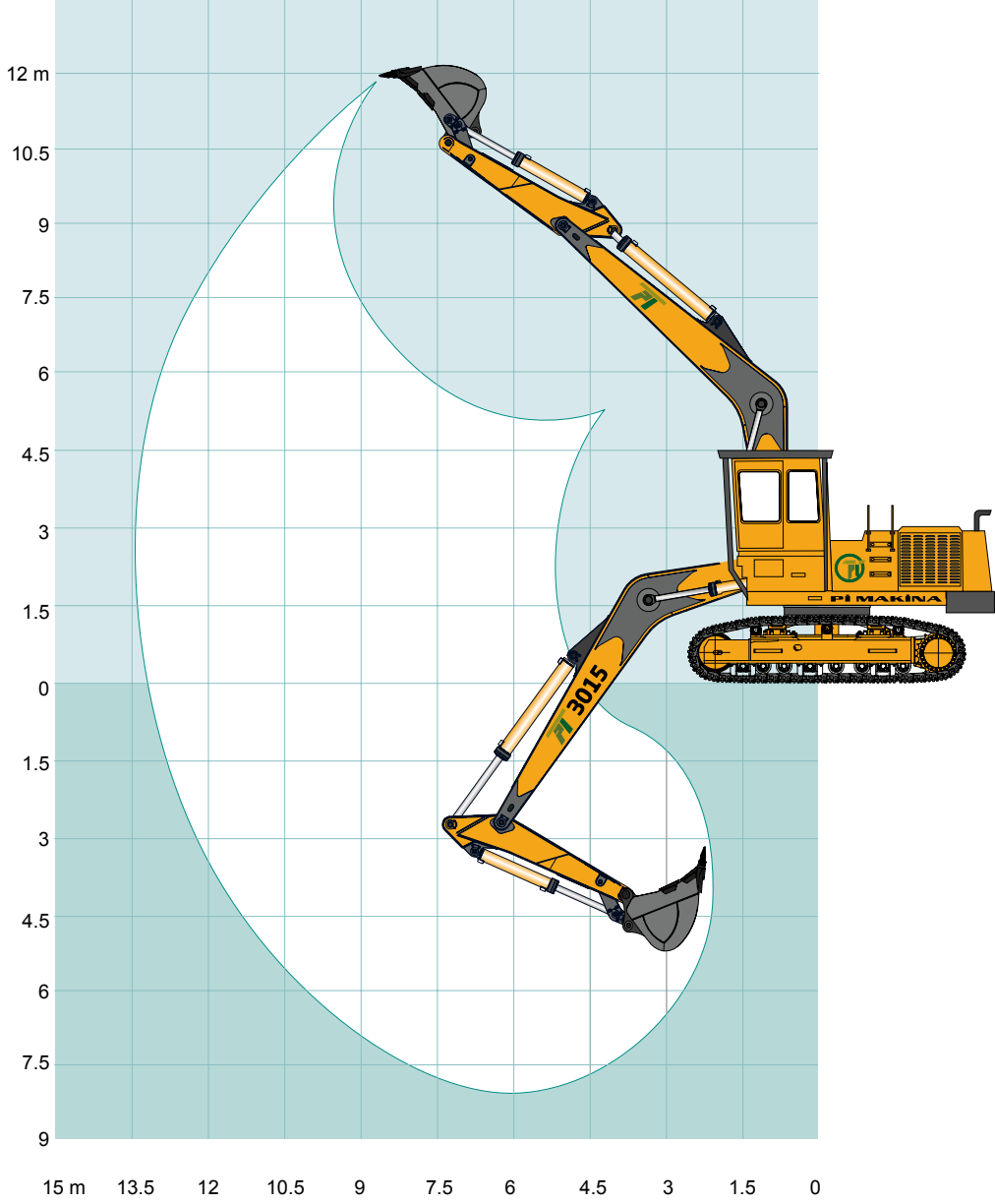


Pozisyon Position	2	3	4	5	6	7	8
Kapasite ton Capacity tons	11.5	8.8	6.9	9.8	8.2	6.9	6.5

Pi 3015

Çalışma Aralığı

Working Ranges



Kazma Derinliği (mm) Digging Depth (mm)	8.000
Bom Uzanma (mm) Max. Reach (mm)	13.100
Boşaltma Yüksekliği (mm) Discharging Height (mm)	8.600
Keççe Dönme Açısı Bucket Angle	180°

Pi 3005 A

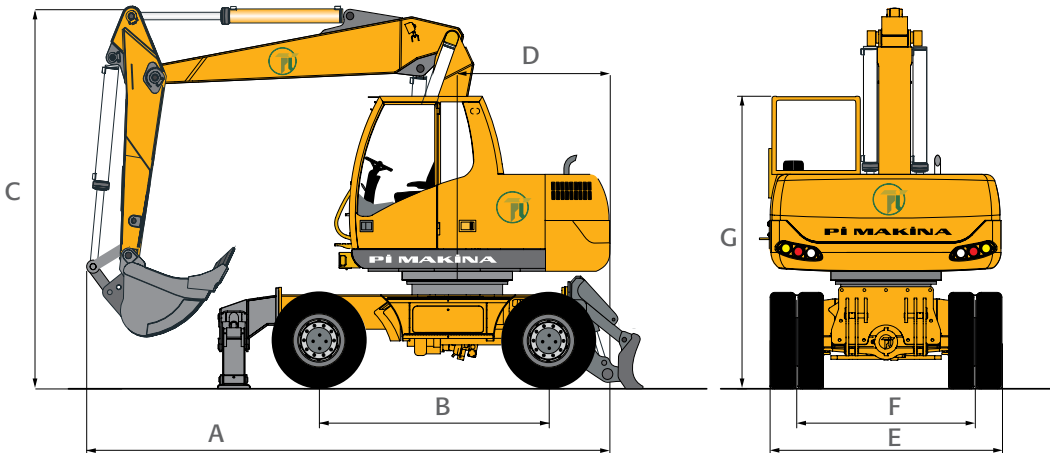

TEKNİK ÖZELLİKLER
 technical specifications

3005 A

Motor (hp) Engine (hp)	120
Şanzıman / Hız (km/s) Transmission / Speed (km/s)	Hidrostatik 0-9 0-31
Dönüş Hızı / Dönüş Torku (rpm / kg.m) Slew Speed / Slew Torque (rpm / kg.m)	9 / 4.800
Lastikler Tires	Çift Lastik 10.000 x 20 / Tek Lastik 18 x19.5
Maks. Kazma Derinliği / Teleskopik Max Digging Depth /	7,250
Maks. Kazma Derinliği / Yukarıda Max Digging Depth /	8,6
Maks. Kazma Derinliği / Yatayda Max Digging Depth /	10,5
Çalışma Ağırlığı (kg) Operating Wight (kg)	16,800 17,800
Keççe Kapasitesi (m ³) Bucket Capacity (m ³)	1,1

A	5690
B	2500
C	4040
D	1665
E	2520
F	1940
G	3100

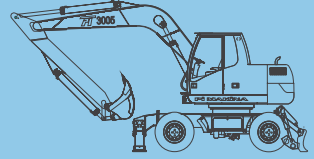
*mm





Lastik Tekerlekli Ekskavatörler

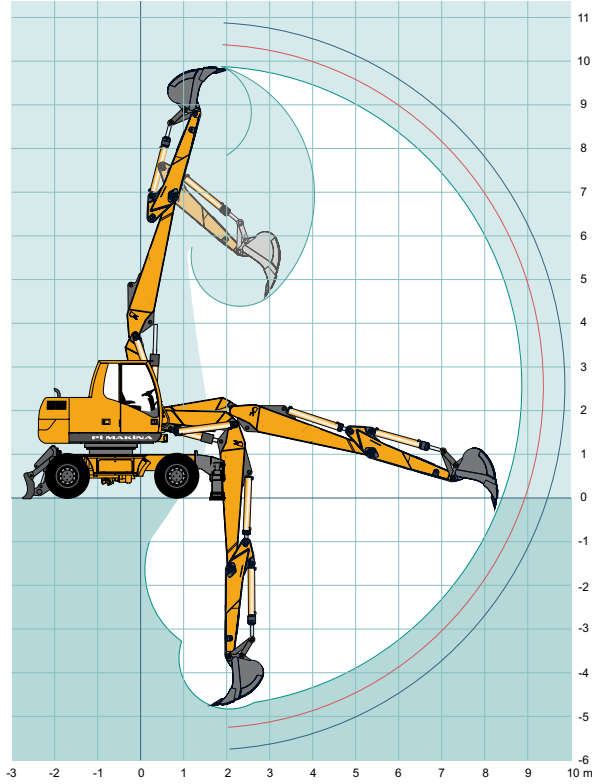
Wheel Excavators



Pi 3005 A

Parçalı Bom + Üç Tip Arm Boyu Çalışma Aralığı

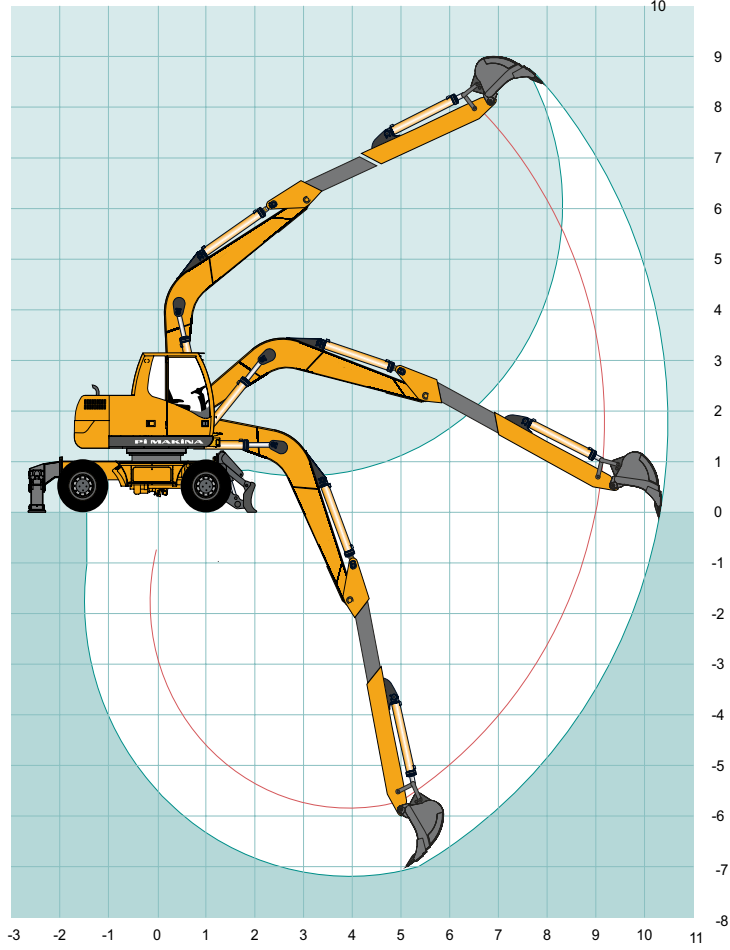
Two-Piece boom + Arm length of the three types



Arm Ölçüleri (mm) Arm Dimensions (mm)	L 2.0 2.000	L 2.5 2.500	L 3.0 3.000
Kazma Derinliği (mm) Digging Depth (mm)	4.900	5.400	5.900
Maks. Kazma Yüksekliği (mm) Max Digging Height (mm)	9.880	10.380	10.880
Bom Uzanma (mm) Max. Reach (mm)	8.500	9.000	9.500
Boşaltma Yüksekliği (mm) Discharging height (mm)	7.700	8.200	8.700
Kova Dönme Açısı Bucket Angle	175°	175°	175°

Pi 3005 A**Mono ve Teleskobik Bom Çalışma Aralığı**

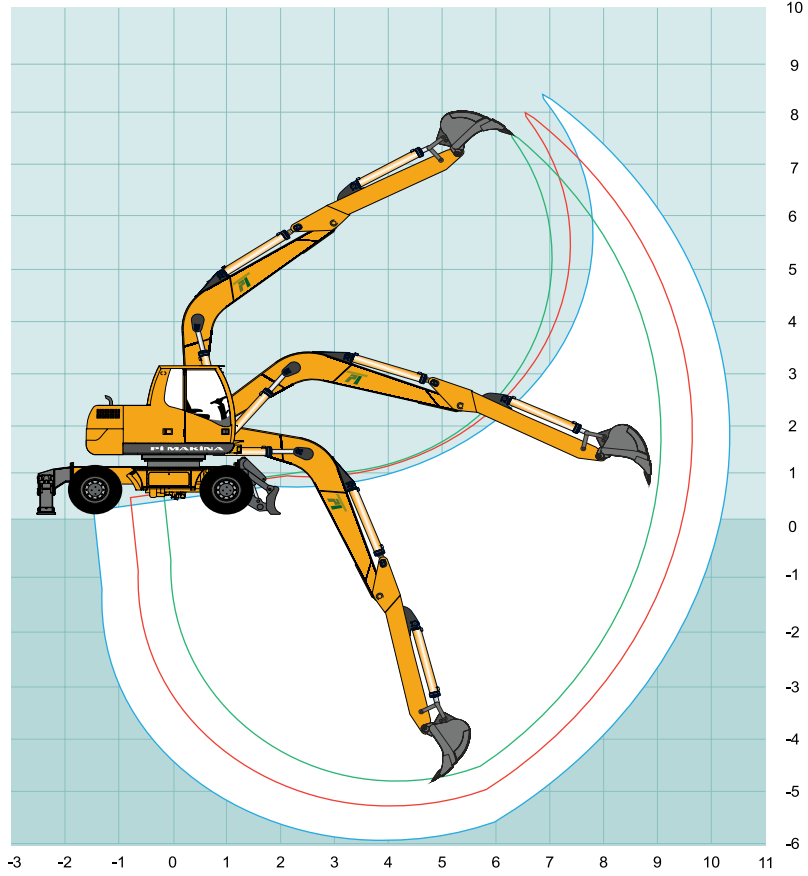
Mono Boom + Arm Telescopic Boom of the Three types



Teleskobik Bom (Durum Pozisyonu) Telescopic Boom Position	Açık Open	Kapalı Closed
Kazma Derinliği Digging Depth	7.200	5.900
Maks. Kazma Yüksekliği Max Digging Height	8.600	8.000
Bom Uzanma Max. Reach	10.500	9.100
Boşaltma Yüksekliği Discharging Height	6.900	6.380
Kova Dönme Açısı Bucket Angle	175°	175°

Pi 3005 A

Mono Bom + Üç Tip Arm Boyu Çalışma Aralığı Mono Boom + Arm Length of the Three types



Arm Ölçüleri (mm) Arm Dimensions (mm)	L 2.0 2.000	L 2.5 2.500	L 2.5 2.500
Kazma Derinliği (mm) Digging Depth (mm)	4.900	5.400	5.900
Maks. Kazma Yüksekliği (mm) Max Digging Height (mm)	7.700	8.050	8.450
Bom Uzanma (mm) Max. Reach (mm)	8.100	8.700	9.300
Boşaltma Yüksekliği (mm) Discharging Height (mm)	5.850	6.200	6.000
Kova Dönme Açısı Bucket Angle	175°	175°	175°

Pi 1051 A



TEKNİK ÖZELLİKLER technical specifications

1051 A

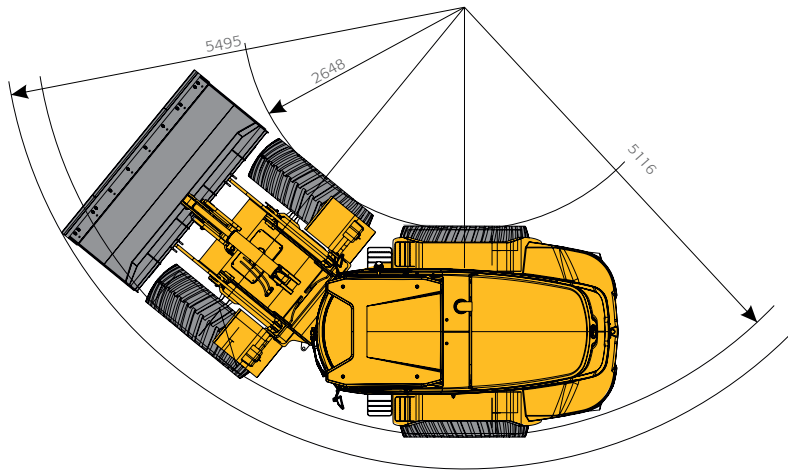
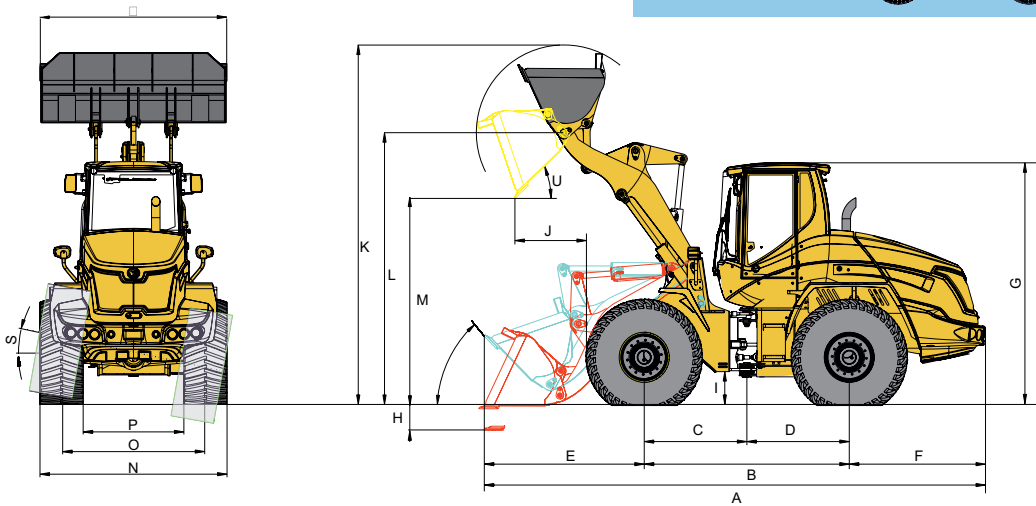
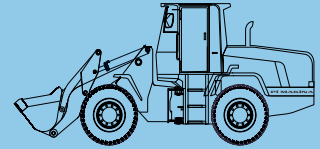
Motor (hp) Engine (hp)	120 hp
Güç Aktarma Power train	Hidrostatik Hydrostatic
Akslar Axle	Ön Sabit / Arka Salınımlı Aks Front Rigid axle / Rear oscilating axle
Direksiyon Sistemi Steering System	Hidrolik Hydraulic
Fren Sistemi Brake System	Hidrolik Hydraulic
Lastik Tires	17,50 x 25
Ağırlık (kg) Weight (kg)	11.000





Lastik Tekerlekli Yükleyiciler

Wheel Loaders



1051 A

A	B	C	D	E	F	G	H	I	J	K	L	M	N
6850	2750	1385	1365	2248	1852	3100	135	425	1050	4807	3636	2741	2350

O	P	R	S	T	U
1860	1350	2500	±10	48°	45°

*mm

Pİ 5001

Pİ 5011

Pİ 5021

Pİ 5041

Pİ 5021T



TEKNİK ÖZELLİKLER

technical specifications

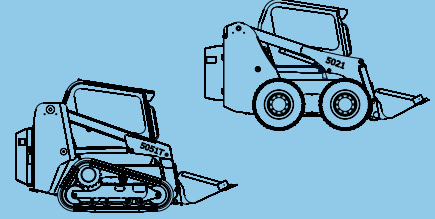
	5001	5011	5021	5041	5021 T
Motor (hp) Engine (hp)	46	46	58	120	80
Güç Aktarma Power Train	Hidrostatik Hydrostatic	Hidrostatik Hydrostatic	Hidrostatik Hydrostatic	Hidrostatik Hydrostatic	Hidrostatik Hydrostatic
Tandem Tandem	Zincir Tahrikli 4 Wheel Chain Drive	Zincir Tahrikli 4 Wheel Chain Drive	Zincir Tahrikli 4 Wheel Chain Drive	Zincir Tahrikli 4 Wheel Chain Drive	Paletli Tracked
Hareket Kumanda Controls	Hidrolik Kumanda Kolu Hydraulic joystick	Hidrolik Kumanda Kolu Hydraulic joystick	Hidrolik Kumanda Kolu Hydraulic joystick	Hidrolik Kumanda Kolu Hydraulic joystick	Hidrolik Kumanda Kolu Hydraulic joystick
Fren Brake	Hidrolik Hydraulic brake	Hidrolik Hydraulic brake	Hidrolik Hydraulic brake	Hidrolik Hydraulic brake	Hidrolik Hydraulic brake
Lastik Tires	27.5 x 8.5 - 15	10 - 16.50	10 - 16.50	12 - 16.50	10 - 16.50
Ağırlık (kg) Weight (kg)	2.000	2.500	2.700	3.150	3.400
Keççe Kapasitesi (m ³) Bucket capacity (m ³)	0.3	0.35	0.4	0.5	0.9





Mini Yükleyiciler

Skid Steer Loaders

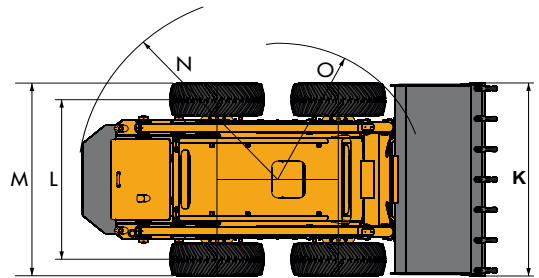
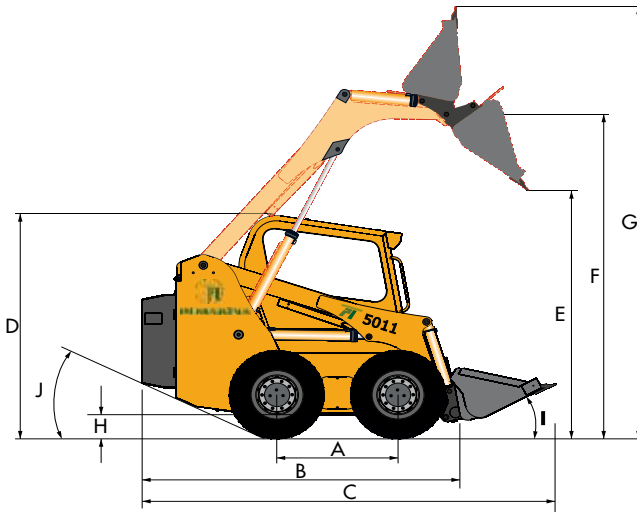


Genel Ölçüler

Machine Dimensions

	A	B	C	D	E	F	G	H	I	J	K	L	M	N	O
5001	810	2230	2810	1850	1950	2630	3450	160	29°	280	1250	1000	1220	1320	1770
5011	933	2547	3239	1980	2250	2870	3745	193	29°	250	1524	1245	1511	1530	1880
5021	1016	2547	3239	1981	2281	2891	3767	203	29°	29	1676	1384	1651	1487	1956
5041	1250	2970	3830	2100	2480	3044	4095	230	28°	26	1827	1510	1827	1825	1280
5021 T	1026	2640	3437	2030	2187	2893	3866	195	24°	21	1727	1305	1615	1550	1228

*mm



PI 1011 PI 1022 PI 1022 Y PI 1021 B



TEKNİK ÖZELLİKLER technical specifications

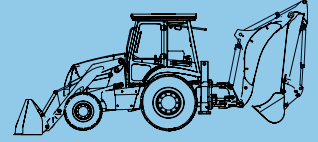
	1011	1022	1022 Y	1021 B
Motor (hp) Engine (hp)	100	120	120	100 - 120
Güç Aktarma Power train	Hidrostatik Hydrostatic	Power Shift	Power Shift	Power Shift
Akslar Axles	Zincir Tahrikli Drive, four wheel	Ön Salınlımlı Arka Sabit Pre - release back hard	Ön Salınlımlı Arka Sabit Pre - release back hard	Ön, Arka Sabit Aks Front and rear rigid axle
Direksiyon Sistemi Steering System	Hidrolik Kumanda Kolu Hydraulic joystick	Hidrolik Kumanda Kolu Hydraulic joystick	Hidrolik Kumanda Kolu Hydraulic joystick	Hidrolik Kumanda Kolu Hydraulic joystick
Fren Sistemi Brake System	Hidrolik Hydraulic break	Hidrolik Hydraulic break	Hidrolik Hydraulic break	Hidrolik Hydraulic break
Lastik Tires	12.5 x 80 - 18 12.5 x 80 - 18	9.00 x 16 - 12.5 x 18 16.9 x 28	16.9 x 28 16.9 x 28	14.5 x 80 - 20 12.5 x 80 - 20
Ağırlık (kg) Weight (kg)	4.600	7.650	8.900	7.980
Kova Kapasitesi (m³) Bucket Capacity (m³)	0.6	1.1 - 1.3	1.1	1.2





Kazıcı Yükleyiciler

Backhoe Loaders

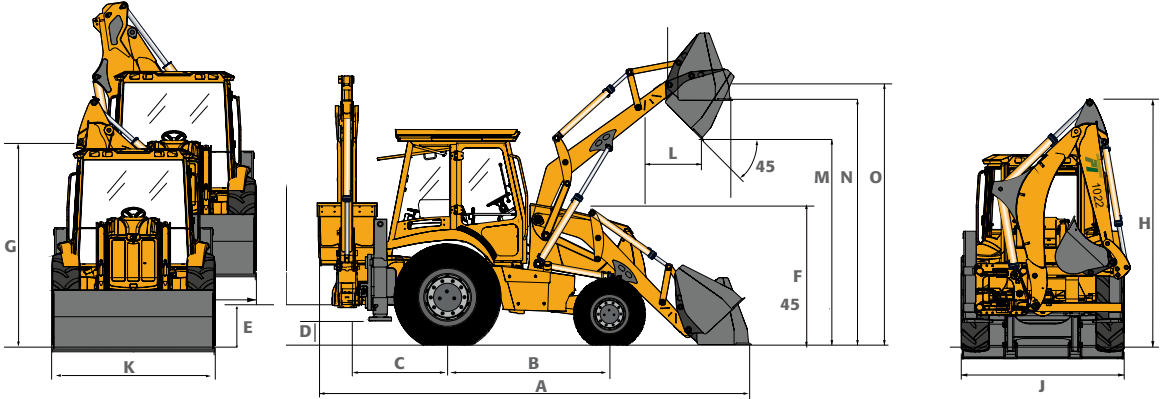


Şantiye Fotoğrafları
Construction site photos



Pİ 1022 Genel Ölçüler

Pİ 1022 Machine Dimensions



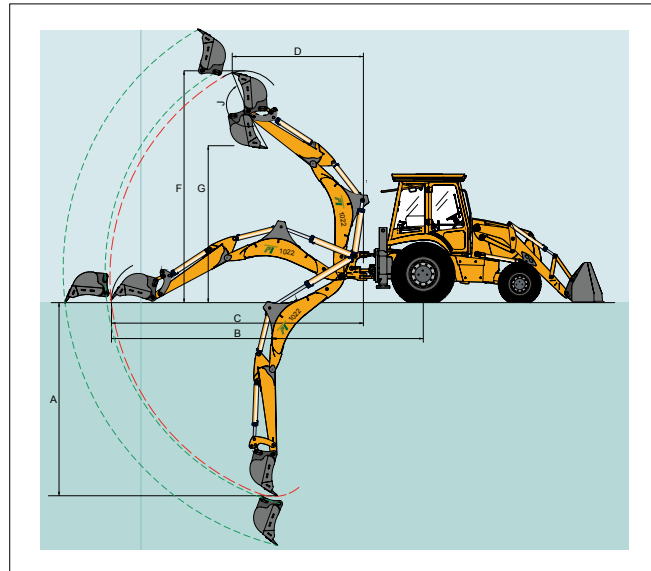
Pİ 1022

A	B	C	D	E	F	G	H	J	K	L	M	N	O
5782	2250	1346	344	510	1832	2870	3660	2300	2350	750	2746	3281	3483

*mm

Pİ 1022 Beko Çalışma Aralığı

Pİ 1022 Backhoe Operating Range



1022 Normal Kazıcı - Normal backhoe

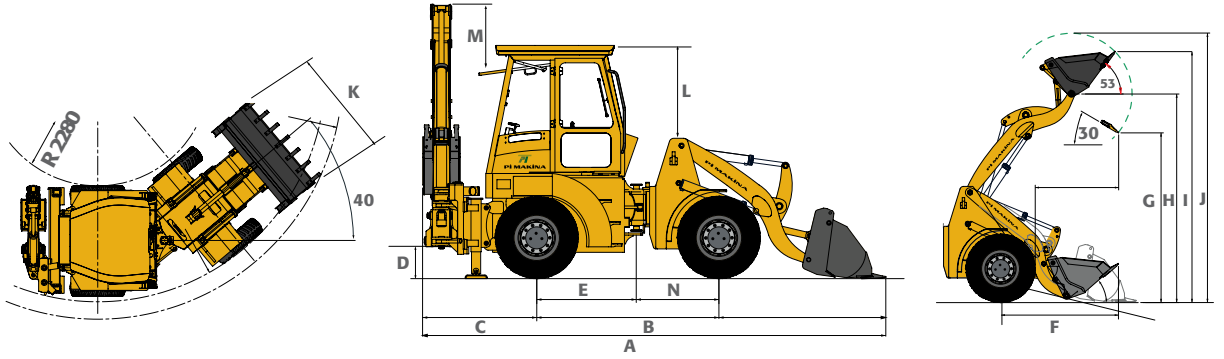
1022 Teleskopik Kazıcı - Telescopic Loader (Açık - Open)

1022 Teleskopik Kazıcı - Telescopic Loader (Kapalı - closed)

A	B	C	D	E	F	G	H	J
4363	7122	5775	2920	6372	5335	3473	1200	200
5410	8076	6728	3872	7328	5889	4021	1200	195
4372	7130	5302	2973	5902	5326	3478	1200	195

*mm

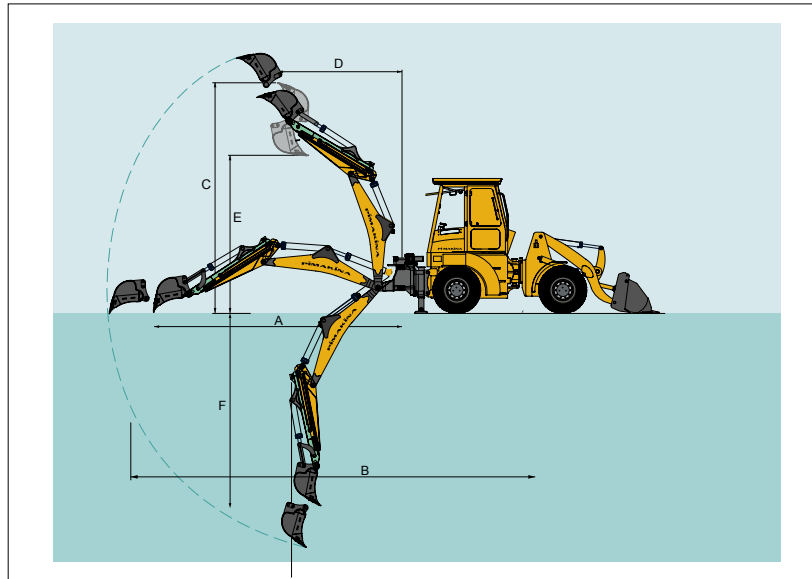
Pi 1021 B Genel Ölçüler Pi 1021 B Machine Dimensions



	A	B	C	D	E	F	G	H	I	J	K	L	M	N
Pi 1021 B	6359	2500	1568	475	1365	1945	2810	3450	4155	4460	2160	3195	3780	1135

*mm

Pi 1021 B Beko Çalışma Aralığı Pi 1021 B Backhoe Operating Range



	A	B	C	D	E	F	G	H	I
1021 B Teleskopik Kazıcı - Telescopic Loader (Açık - Open)	6890	8195	6000	3910	4275	5450	7600	1400	167
1021 B Teleskopik Kazıcı - Telescopic Loader (Kapalı - closed)	5848	7160	5455	2923	3727	4420	6560	1400	167

*mm

Pİ 1010 D

Pİ 1020 D



TEKNİK ÖZELLİKLER

technical specifications

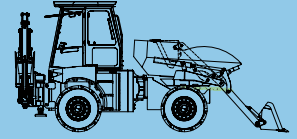
	1010 D	1020 D
Motor (hp) Engine (hp)	85	120
Güç Aktarma Power train	Hidrostatik Hydrostatic	Power Shift
Akslar Axles	Ön-Arka Sabit Aks Rigid axles	Ön-Arka Sabit Aks Rigid axles
Direksiyon Sistemi Steering System	Hidrolik Hydraulic	Hidrolik Hydraulic
Fren Sistemi Brake System	Hidrolik fren Hydraulic brake	Hidrolik fren Hydraulic brake
Lastik Tires	14.5 - R 20	16.0 / 70- 24
Ağırlık (kg) Weight (kg)	6.400	8.500
Damper Kapasitesi (m ³) Dumper Capacity (m ³)	2	3.5
Maks. Kazma Derinliği (mm) Max. Digging Depth (mm)	3.200	2.980



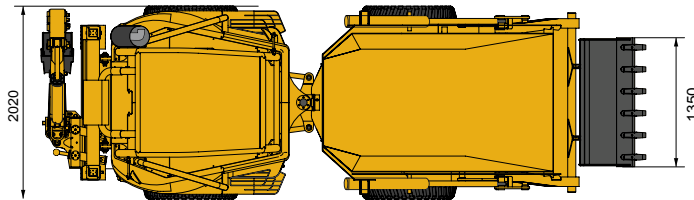
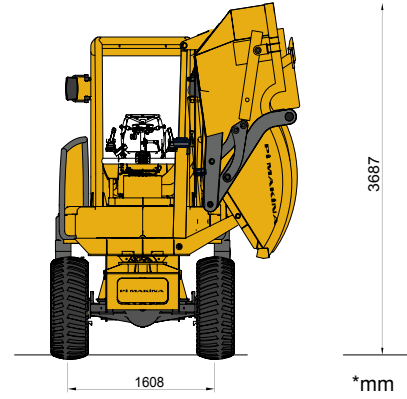
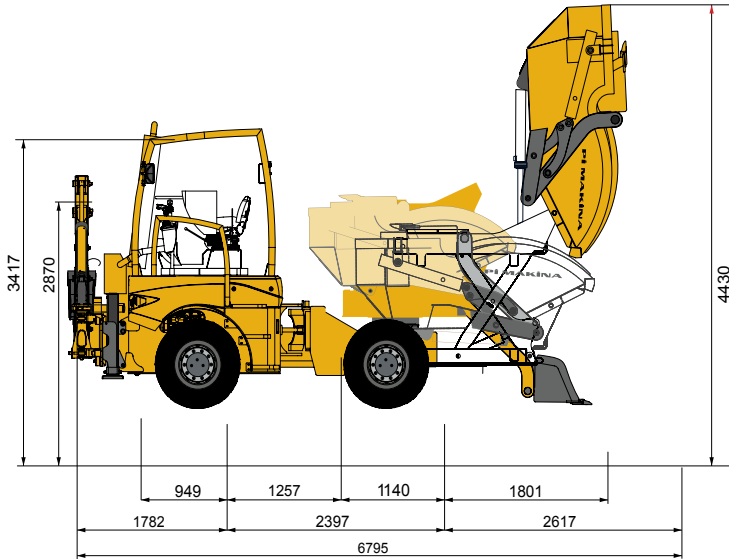


Kendini Yükleyen Damperler

Self Loading Dump Trucks



Pİ 1010 D Genel Ölçüleri
Pİ 1010 D Machine Dimensions



Pİ 3180 A

Pİ 3300



TEKNİK ÖZELLİKLER

technical specifications

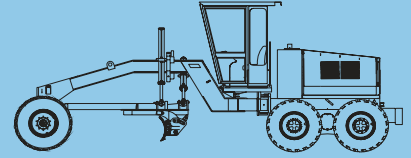
	3180 A	3300
Motor (hp) Engine (hp)	150 - 216	180 - 240
Şanzıman Transmission	Power Shift 6 ileri 3 geri 6 Forward 3 Back	Power Shift 6 ileri 3 geri 6 Forward 3 Back
Akslar Axle	T.o ± 15° ön teker yana 22 Tandem oscillation (front up /down)	T.o ± 10° ön teker yana 22° Tandem oscillation (front up /down)
Direksiyon Sistemi Steering System	Hidrostatik Belden Kırma Hydrostatic	Hidrostatik Belden Kırma Hydrostatic
Fren Sistemi Brake System	Hidrolik fren Hydraulic multi - disc	Hidrolik fren Hydraulic multi - disc
Lastik Tires	14.00 x 24	14.00 x 24
Ağırlık (kg) Weight (kg)	15.200	18.300
Bıçak Boyutları Dimensions	3655 x 610 x 25	3655 x 610 x 25
Ön Dozer Bıçağı ve Arka Ripper Front Blade & Rear Ripper	Opsiyonel Optional	Opsiyonel Optional





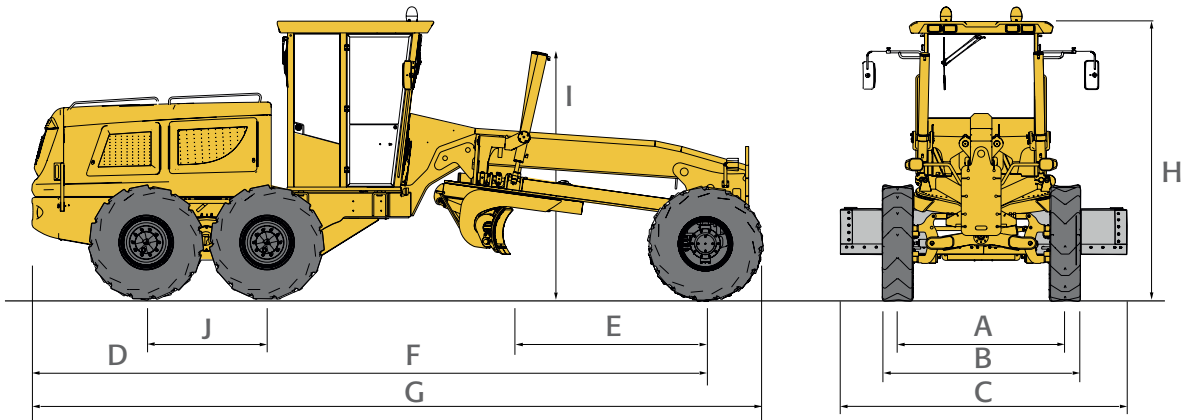
Greyderler

Graders



Genel Ölçüler

Machine Dimensions



3180 A

3300

A	B	C	D	E	F	G	H	I	J
2138	2500	3658	1850	2600	6300	8500	3550	3100	1540
2310	2640	3655	1740	2750	6800	9060	3350	2900	1550

*mm



Pİ 4009



TEKNİK ÖZELLİKLER

technical specifications

4009

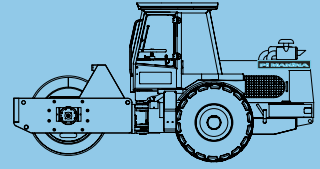
Motor (hp) Engine (hp)	150
Şanzıman Transmission	Hidrostatik ileri ve geri 2 vites Hydrostatic 2 forward and reverse gears
Tambur Çapı ve Genişliği (mm) Drum diameter and width (mm)	1.200 x 1.600
Arka Lastikler Rear Tyres	23.1 x 26
Şase Chassis	Belden Kırma Şase Articulated Frame
Direksiyon Sistemi Steering System	Hidrolik Hydraulic
Ağırlık (kg) Weight (kg)	15.700
Vibrasyon Frekansı Vbration Frequency	Vibrasyon frekansı 0-30 ,Vurma Gücü 39.000 , Zemin Basıncı 40.4 Vibration frequency, Impact Force. Ground pressure



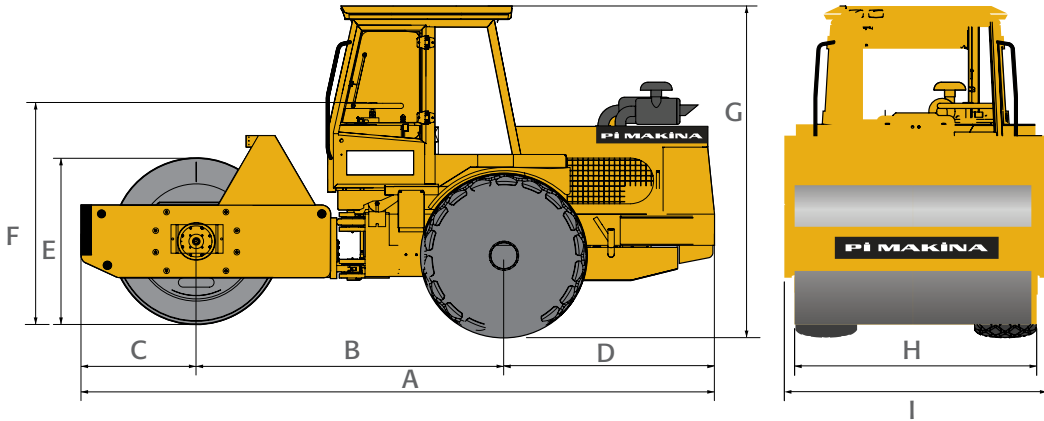


Vibrasyonlu Silindir

Vibrating Roller



Pİ 4009 Genel Ölçüleri
Pİ 4009 Machine Dimensions



	A	B	C	D	E	F	G	H	I
Pİ 4009	6050	2950	1100	2000	1600	2140	2910	2300	2500

*mm



Pİ 1030 D



TEKNİK ÖZELLİKLER technical specifications

1030 D

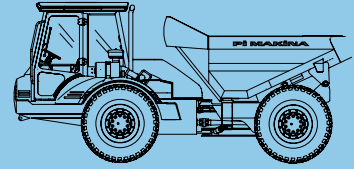
Motor (hp) Engine (hp)	120
Şanzıman Transmission	Power Shift
Akslar Axle	Ön - Arka Sabit Aks Front rigid axle
Direksiyon Sistemi Steering System	Hidrolik Hydraulic
Fren Sistemi Brake System	Hidrolik Hydraulic
Lastik Tires	17.5 - R 25
Ağırlık (kg) Weight (kg)	6.500
Damper Kapasitesi (m ³) Dumper Capacity (m ³)	5.6



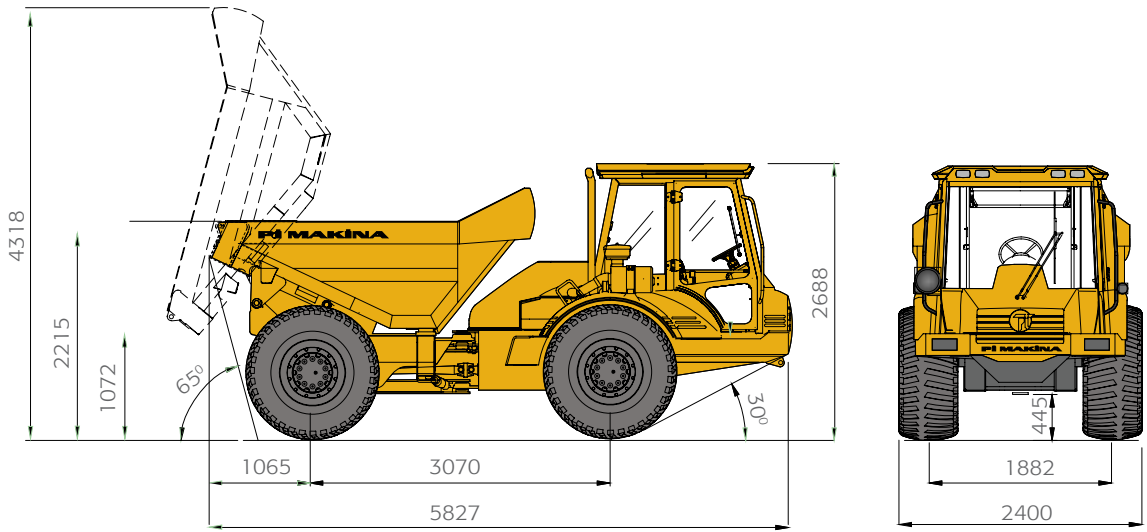


Damperli Kamyonlar

Dump Trucks



PI 1030 D Genel Ölçüleri
PI 1030 D Machine Dimensions



*mm



Pi Kam 5

Pi Kam 6



TEKNİK ÖZELLİKLER

technical specifications

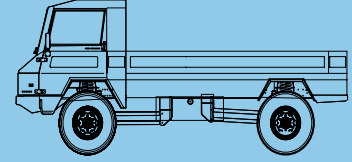
	Pi Kam 5	Pi Kam 6
Motor (hp) Engine (hp)	160	160
Boş Ağırlık (kg) Kerb Weight (kg)	2750	4000
Maksimum Hız (km / h) Max. Speed (km / h)	130	120
Tırmanma Kabiliyeti Gradeability	> %60	> %60
Yüklü Ağırlık (kg) Gross Weight (kg)	5.000	6.000
Şanzıman Transmission	5 ileri 1 geri	5 ileri 1 geri
Lastikler Tires	255 / 100 R16	12.50 - 20
Tekerlek İzi (mm) Wheel Track (mm)	1650	1850





Kamyonlar

Trucks



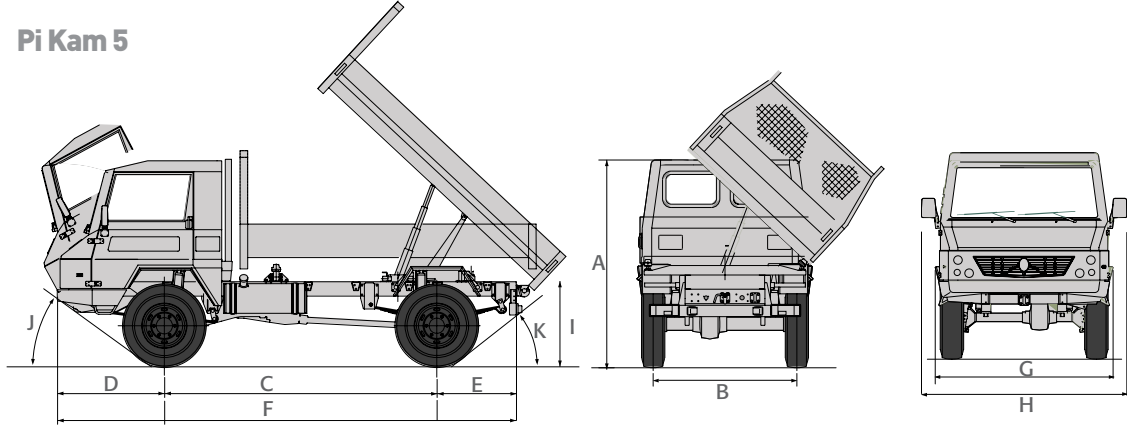
Genel Ölçüler

Machine Dimensions

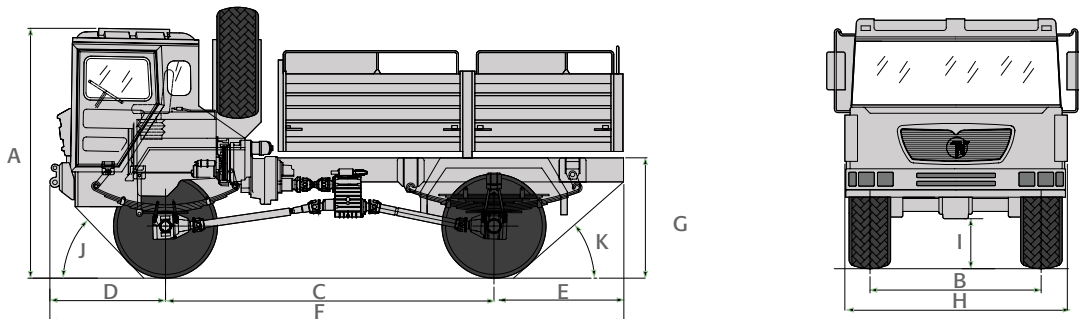
	A	B	C	D	E	F	G	H	I	J	K
Pi Kam 5	2380	1700	3100	1120	830	5050	2085	2260	1040	40°	45°
Pi Kam 6	2750	1850	3550	1270	1510	6330	1150	2175	330	35°	35°

*mm

Pi Kam 5



Pi Kam 6



Pİ Kam 18

Pİ Kam 34 - 400

Pİ Kam 26 (6x6)



TEKNİK ÖZELLİKLER

technical specifications

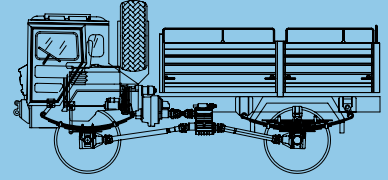
	Pi Kam 18	Pi Kam 34-400	Pi Kam 26 (6x6)
Motor (hp) Engine (hp)	240	400	300
Boş Ağırlık (kg) Kerb Weight (kg)	8700	8870	10350
Maximum Hız (km /h) Max. Speed (km/h)	100	105	100
Tırmanma Kabiliyeti Gradeability	> %60	> %60	> %60
Yüklü Ağırlık (kg) Gross Weight (kg)	18.000	26.000	26.000
Şanzıman Transmission	9 ileri 1 geri	9 ileri 1 geri	9 ileri 1 geri
Lastik Tires	12.00 - 20	315 / 80 R 22.5	14.00 - 20
Tekerlek İzi (mm) Wheel Track (mm)	2000	2100	2100





Kamyonlar

Trucks



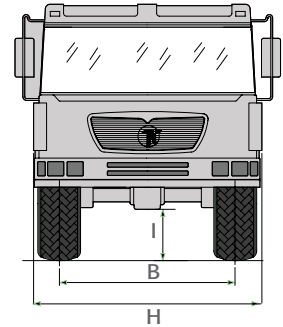
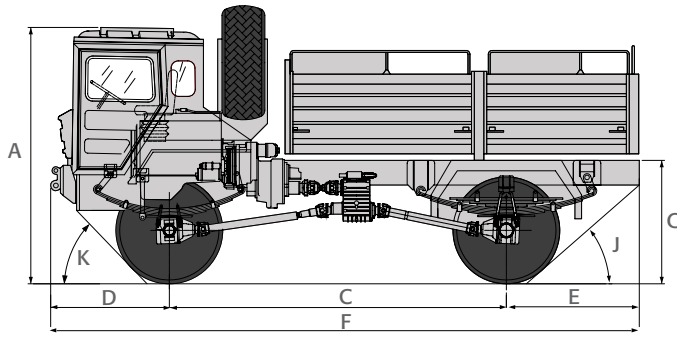
Genel Ölçüler

Machine Dimensions

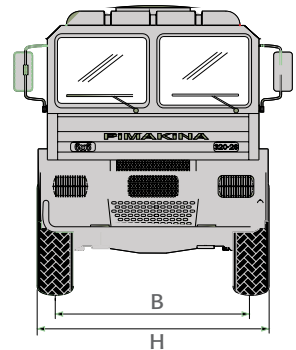
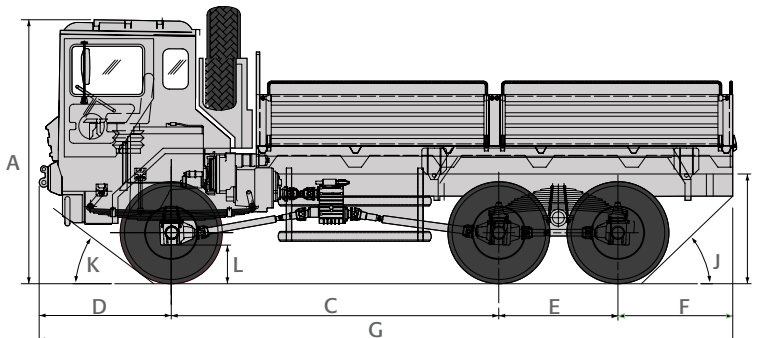
	A	B	C	D	E	F	G	H	I	J	K
Pi Kam 18	3275	2010	4300	1530	1420	5050	1150	2500	460	40°	45°
Pi Kam 26 (6X6)	3275	2100	3850	1530	1400	1270	8125	2500	1300	52°	21°
Pi Kam 34- 400	3200	2075	4500	2400	1350	1825	9075	2500	1830	35°	35°

*mm

Pi Kam 18



Pi Kam 26 (6X6)



Personel Taşıyıcı



TEKNİK ÖZELLİKLER technical specifications

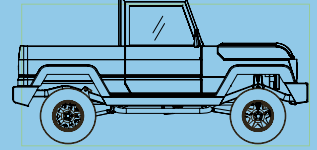
Motor (hp) Engine (hp)	160
Maksimum Hız (km / s) Max. Speed (km / h)	170
Tırmanma Kabiliyeti Gradeability	> %60
Ağırlık (kg) Weight (kg)	1800
Şanzıman Transmission	4 ileri 1 geri 4 forward 1 back
Lastikler Tires	12.5 x 16
Tekerlek İzi (mm) Wheel Track (mm)	1650



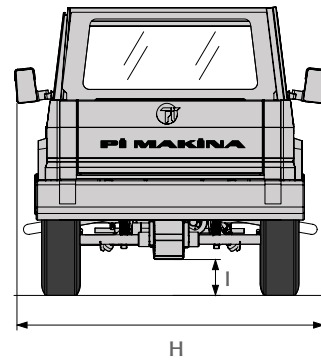
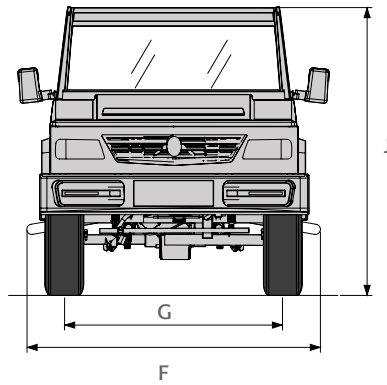
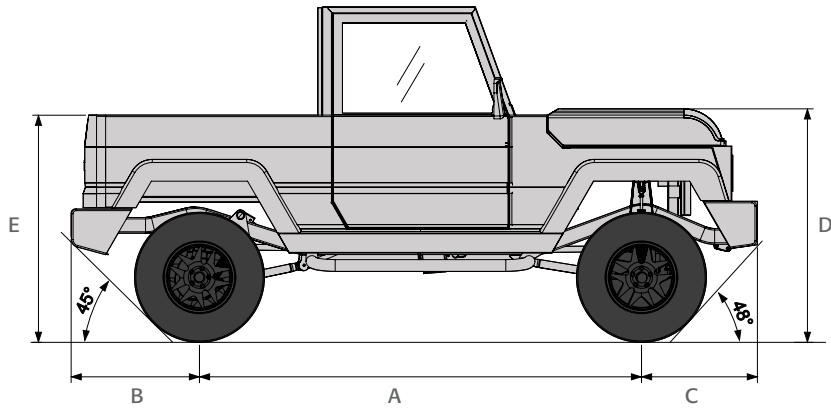


Personel Taşıyıcı

Personnel Carrier



Genel Ölçüler Machine Dimensions



A	B	C	D	E	F	G	H	I	J
2850	827	747	1505	1464	2200	1650	2300	269	2158

*mm

Pİ Asf Fin 400 T



TEKNİK ÖZELLİKLER technical specifications

Asf Fin 400 T

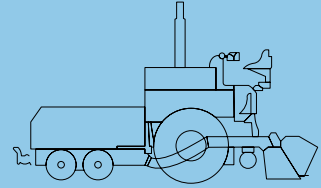
Motor (hp) Engine (hp)	70 bg (SAE), Silindirli hava Soğutmalı dizel motor
Ağırlık (kg) Weight (kg)	8.75 m yayıcı ile 14.000 kg
Maksimum Kalınlık (mm) Max.Thickness (mm)	10 - 300 mm
Serme Kapasitesi (t / h) Paving capacity (t / h)	400 t / saat





Asfalt Finişeri

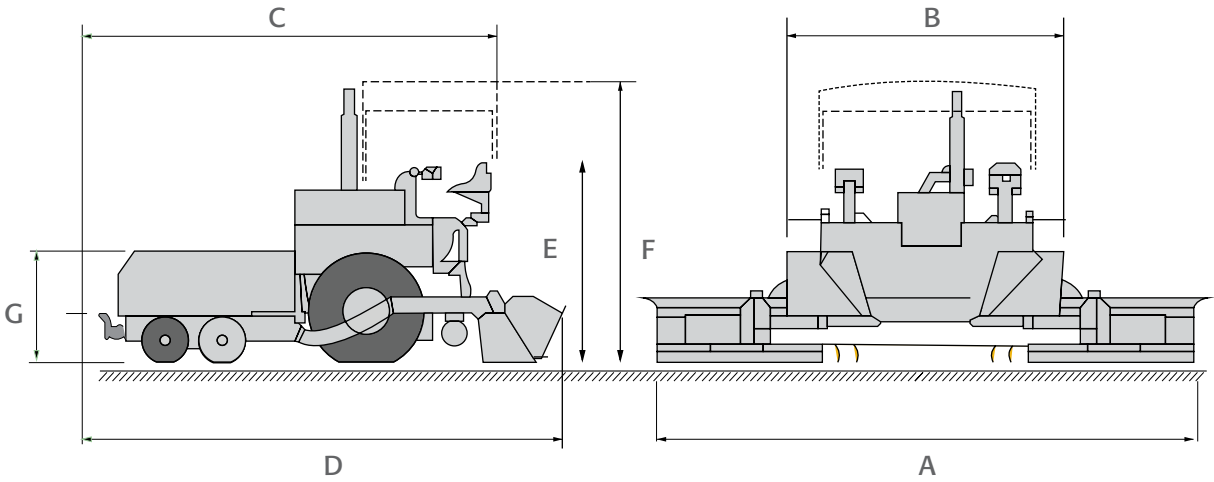
Asphalt Finisher



Asf Fin 400 T

A	B	C	D	E	F	G
6250	3170	4810	5650	2388	3478	1370

*mm





Deriner Barajı İnşaatında
Pi MAKİNA Ekipmanları Ve
Makinaları Kullanılmıştır

*All Construction Of The Deriner Dam
Have Been Completed By Pi MAKİNA's
Machines And Equipments*





diğer ürünlerimiz

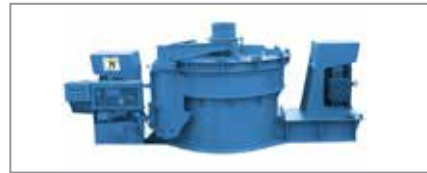
other products





Diğer Ürünlerimiz

other products





Konya Yolu 23.Km 06831 Gölbaşı - ANKARA / TÜRKİYE
Tel: +90 312 484 08 00 - Fax: +90 312 484 1436
sales@pimakina.com.tr

www.pimakina.com.tr